

# MONTHLY MEMBERSHIP PROGRESS REPORT

LOCATION INDIA

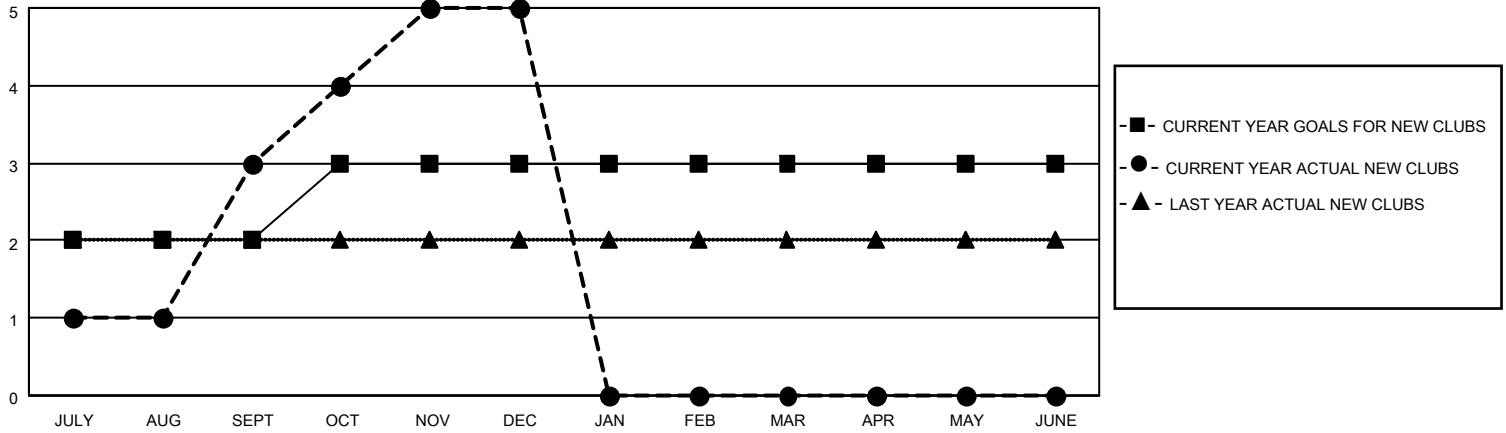
District 316 B

Results as of: 12/31/2021

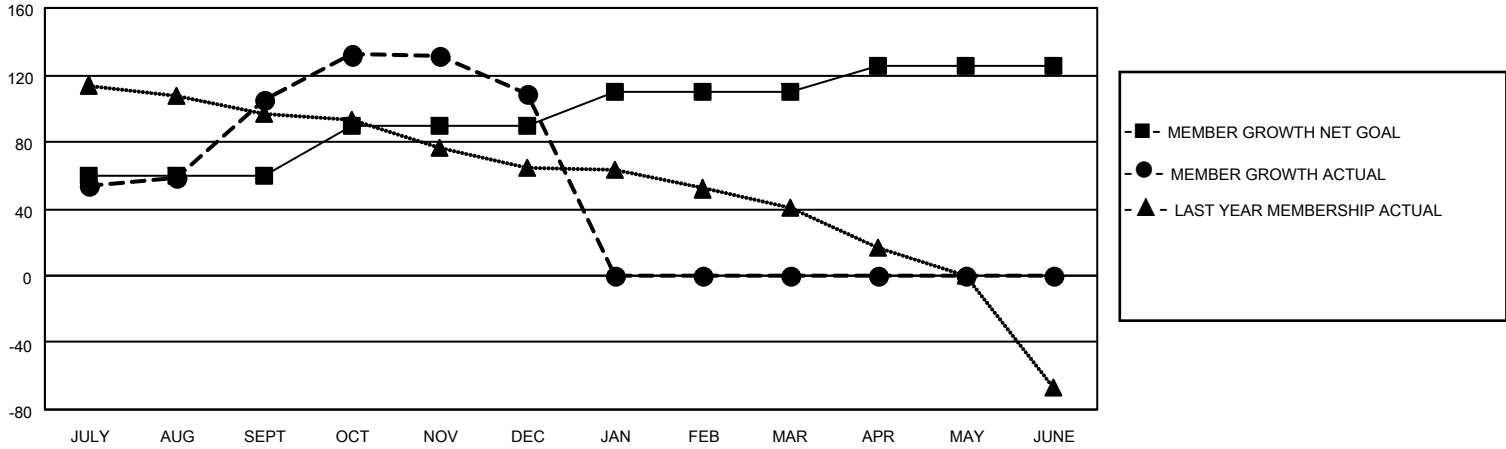
Clubs			
RESULTS FOR 2021-2022			
QUARTER	NEW CLUB GOAL	NEW CLUBS	DROPPED CLUBS
JULY/AUG/SEPT	2	3	0
OCT/NOV/DEC	1	2	2
JAN/FEB/MAR	0	0	0
APR/MAY/JUNE	0	0	0

Members			
RESULTS FOR 2021-2022			
QUARTER	MEMBER GROWTH NET GOAL	MEMBER GROWTH ACTUAL	DROPPED MEMBERS ACTUAL (including transfers)
JULY/AUG/SEPT	60	114	8
OCT/NOV/DEC	30	117	112
JAN/FEB/MAR	20	0	0
APR/MAY/JUNE	15	0	0

**GOALS AND ACTUAL NEW CLUBS CUMULATIVE**



**GOALS AND ACTUAL MEMBERS CUMULATIVE**



**DROPPED CLUBS: 2**

**31 CLUBS OF 61 ADDED 1 OR MORE NEW MEMBERS**

**GENDER DISTRIBUTION**

MALE	1,248 (75.41%)
FEMALE	407 (24.59%)
NON BINARY	0 (0.00%)
PREFER NOT TO ANSWER	0 (0.00%)

**DROPPED MEMBERS**

[CLICK HERE FOR CUMULATIVE MEMBERSHIP DATA](#)

DECEASED	5
CLUB CANCELLED	36
OTHER	79
<b>TOTAL</b>	<b>120</b>

TOTAL FAMILY UNIT MEMBERS	552
FAMILY MEMBERS PAYING HALF DUES	324